

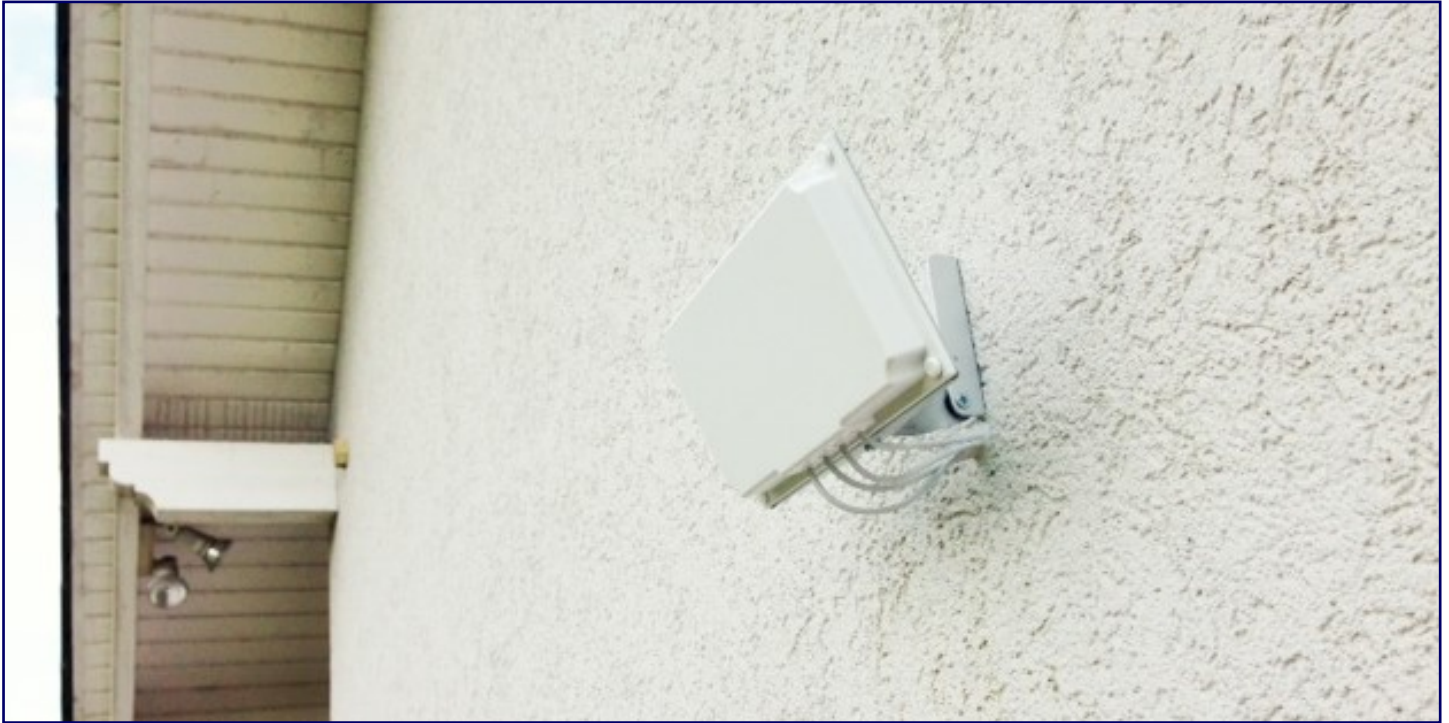


# OUTDOOR PAN & TILT ANTENNA BRACKET

Part No: B2566NPA

"Performance Matters"

For Cisco Antenna Part No AIR-ANT2566P4W-R=



This bracket is designed specifically for the Cisco 4-element dual band patch panel directional antenna (Cisco part number AIR-ANT2566P4W-R=). The antenna components go through an anodising treatment to provide an aesthetically pleasing and weatherproof finish for indoor and outdoor use.

## BENEFITS

The performance of your Cisco wireless LAN can be compromised by poor antenna installation. The unique two hinge design of this antenna mounting bracket allows the antenna to be aimed specifically at its intended target. This is achieved by 'pan' and 'tilt' movement of the face of the antenna to provide adjustment in both the horizontal and vertical planes. The antenna mounting bracket is designed for easy mounting to any flat surface and ships with fixing stud bolts for attaching the Cisco antenna to the front face of the bracket.

## SUPPORTED ANTENNAS

This bracket is suitable for the following models of Cisco antenna.



AIR-ANT2566P4W-R=

**PLEASE CONTACT DW WIFI TO REQUEST INFORMATION ON OUR FULL RANGE OF ACCESSORY PRODUCTS FOR THE CURRENT RANGE OF CISCO ACCESS POINTS AND ANTENNAS**

## HOW CAN WE HELP YOU?

DW WiFi The Woodlands Holding, Orchard Lane, Ironbridge TF8 7PA Tel: +44 (0)1952 432092  
sales@dw-wifi.com [www.dw-wifi.com](http://www.dw-wifi.com)